



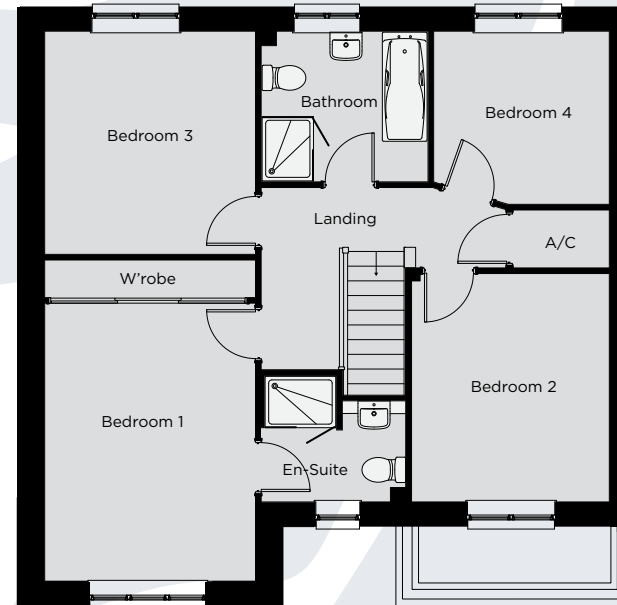
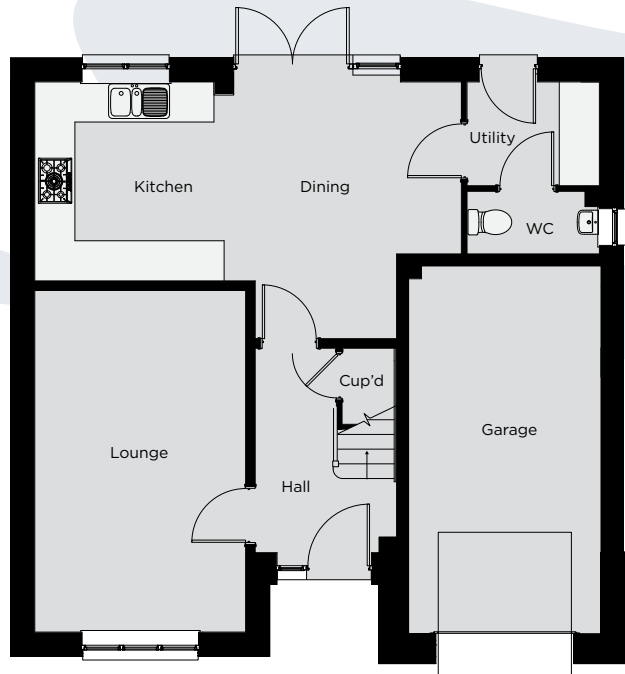
The Oxwich

The Oxwich

A four bedroom detached home (123m²)



Fothergill Park



Lounge	5.60m x 3.30m	18' 5" x 10' 10"
Kitchen	3.10m x 3.10m	10' 2" x 10' 2"
Dining	3.90m x 3.52m	12' 9" x 11' 6"
Utility	2.05m x 1.58m	6' 8" x 5' 2"
Cloak	2.05m x 1.00m	6' 8" x 3' 3"

Bedroom 1	5.20m x 3.30m	17' 1" x 10' 10"
En-Suite	2.00m x 2.00m	6' 7" x 6' 7"
Bedroom 2	3.60m x 3.12m	11' 10" x 10' 3"
Bedroom 3	3.50m x 3.36m	11' 6" x 11' 1"
Bedroom 4	2.75m x 2.67m	9' 0" x 8' 9"
Bathroom	2.65m x 2.35m	8' 8" x 7' 8"



WDL Homes

WDL Homes operate a policy of continuous product development and as such all particulars provided in this specification may change. Consequently all details should be regarded as general advice and as such cannot be relied upon as accurately describing any of the Specified Matters prescribed by any Order made under the Property Misdescriptions Act 1991, nor do the contents constitute any part of the contract or to be taken as an indication of warranty or guarantee on any property. Images are representative only and external elevations may vary from plot to plot

